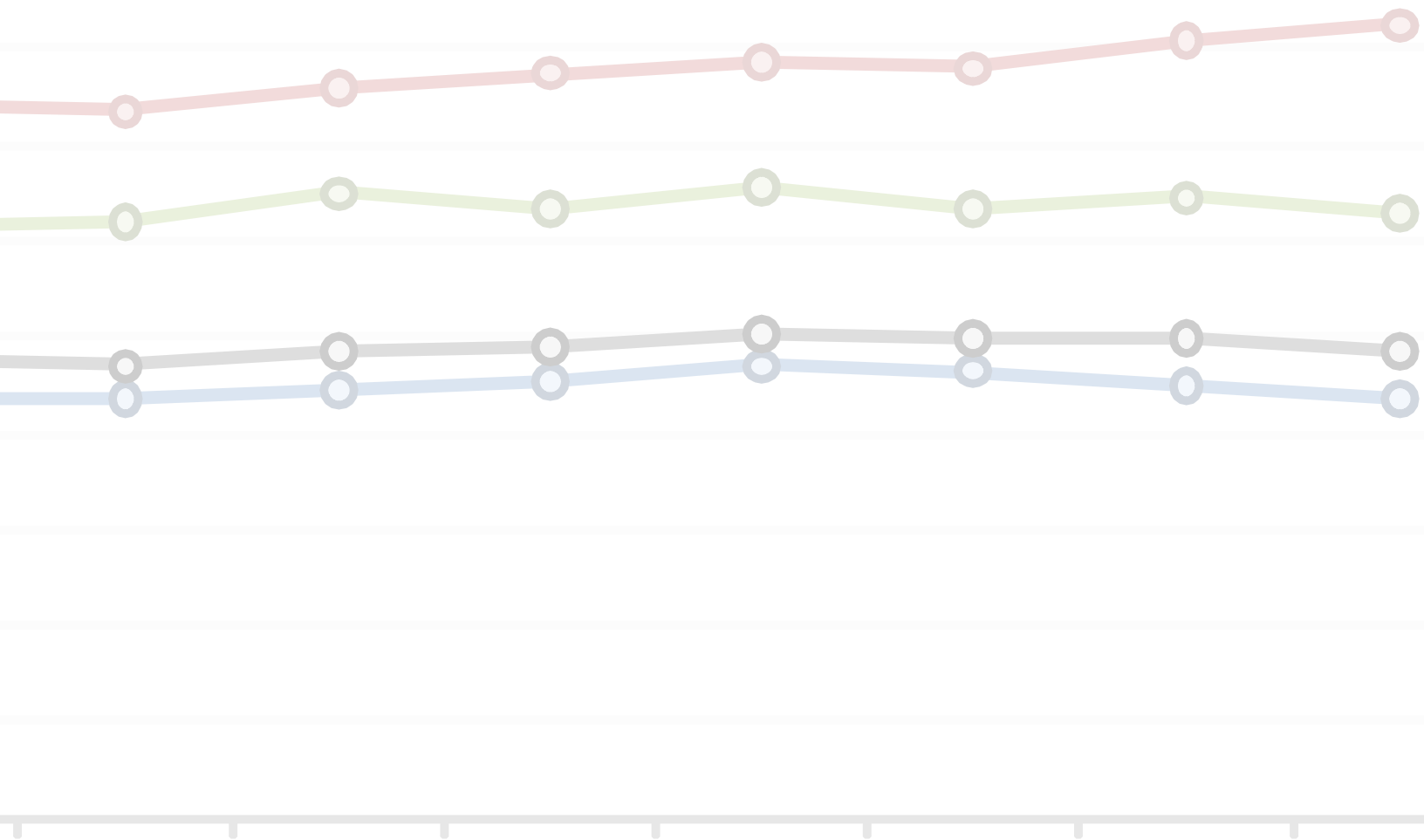




JULY 2010

RACE-RECOVERY INDEX

IS STIMULUS HELPING COMMUNITIES IN CRISIS?



KIRWAN INSTITUTE

FOR THE STUDY OF RACE AND ETHNICITY

THE OHIO STATE UNIVERSITY

john a. powell
Executive Director

Andrew Grant-Thomas
Deputy Director

.....

KIRWAN INSTITUTE

The Kirwan Institute for the Study of Race and Ethnicity is a university-wide interdisciplinary research institute. We generate and support innovative analyses that improve understanding of the dynamics that underlie racial marginality and undermine full and fair democratic practices throughout Ohio, the United States, and the global community. Responsive to real-world needs, our work informs policies and practices that produce equitable changes in those dynamics.

.....

.....

STAFF CONTRIBUTORS

So Young Lee, *Research Assistant*

Matthew Martin, *GIS/Planning Specialist*

Kathy Baird, *Director of Communications*

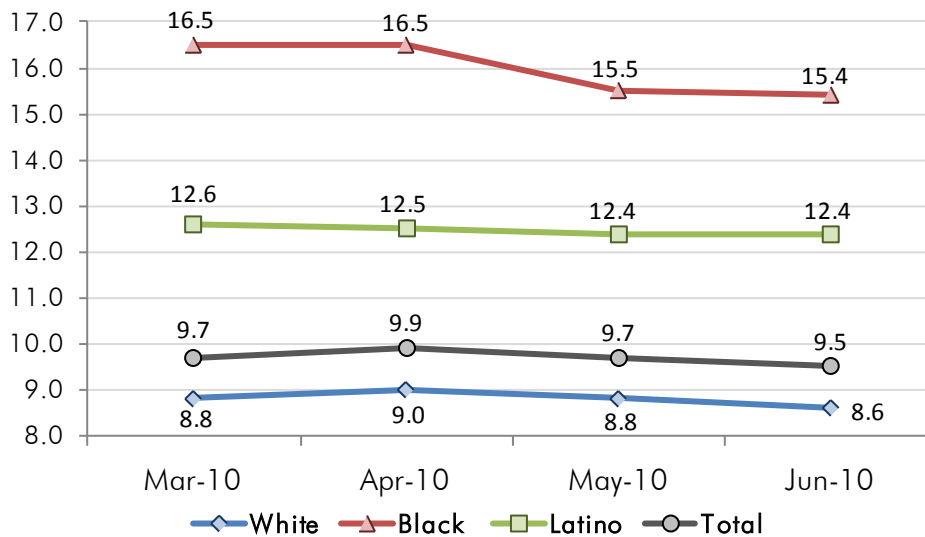
.....



NATIONAL UNEMPLOYMENT

The national unemployment rate decreased by one fifth of a percentage point in June 2010, despite the termination of 125,000 temporary Census jobs. Private sector employment increased by 83,000 jobs. Unemployment rates within major race groups remained steady over the month, but unemployment rates for men and for non-White teenagers experienced slight to moderate increases. While few drastic changes have taken place from month-to-month, a review of total unemployment over the past year shows that the number of unemployed Whites has decreased by 1.7%, while the number of unemployed Blacks remains 4.4% higher, and the number of unemployed Latinos is 3% higher than one year ago. As concern for job creation grows, these numbers show how communities of color have the greatest need for new employment opportunities.

Chart 1. U.S. Unemployment Rate by Race: March 2010- June 2010



Source: U.S. Bureau of Labor Statistics

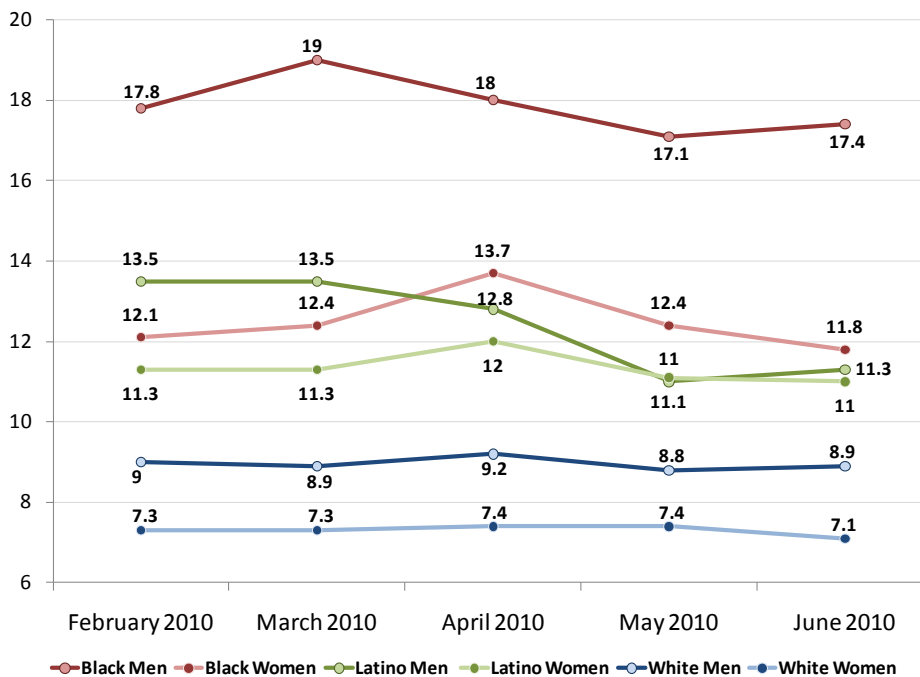
Table 1. U.S. Unemployed (in thousands) by Race

Race	Jun-09	Jul-09	Aug-09	Sep-09	Oct-09	Nov-09	Dec-09	Jan-10	Feb-10	Mar-10	Apr-10	May-10	Jun-10	% Change (year over year)	Unemployment Increase
White	10,986	10,927	11,254	11,366	11,813	11,589	11,266	10,782	10,982	10,945	11,295	11,070	10,797	-1.7%	-189
Black	2,617	2,600	2,682	2,701	2,754	2,757	2,843	2,929	2,812	2,951	2,966	2,794	2,732	4.4%	115
Latino	2,739	2,792	2,908	2,849	2,939	2,872	2,891	2,848	2,800	2,859	2,834	2,836	2,820	3.0%	81
Total	14,721	14,534	14,993	15,159	15,612	15,340	15,267	14,837	14,871	16,755	17,095	16,700	16,349	11.1%	1,628

Source: U.S. Bureau of Labor Statistics

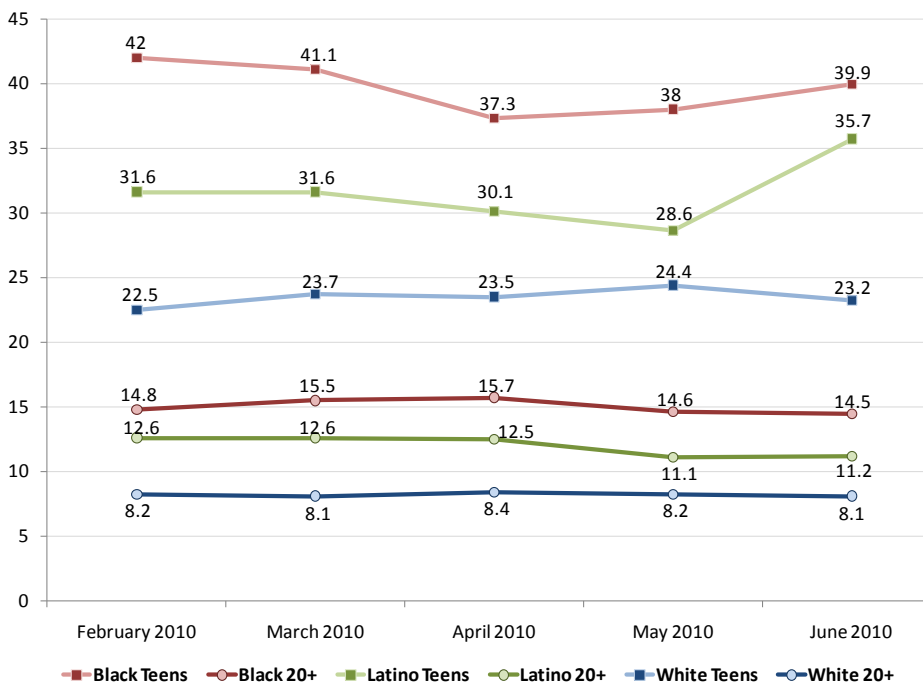


Chart 2. U.S. Unemployment Rates by Race and Gender



Source: U.S. Bureau of Labor Statistics

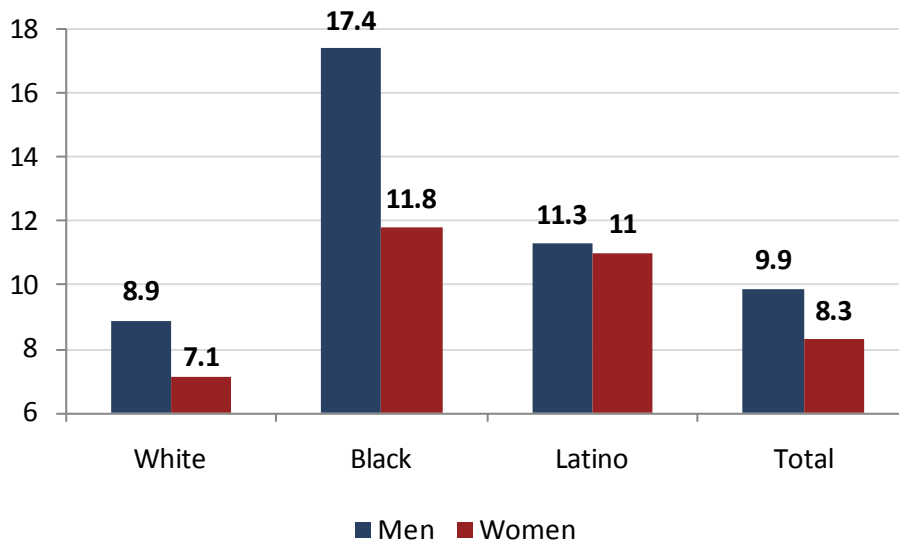
Chart 3. U.S. Unemployment Rates by Race and Age



Source: U.S. Bureau of Labor Statistics

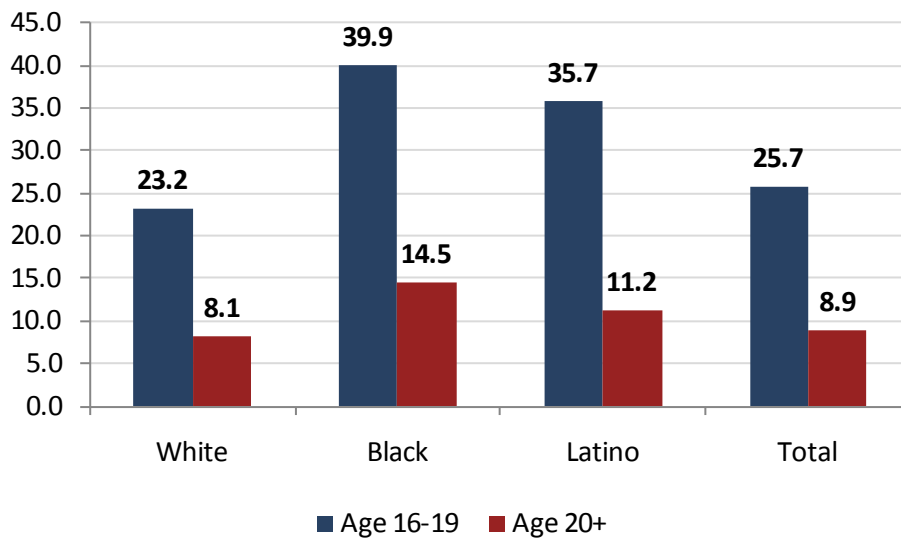


Chart 4. June 2010 Unemployment Rates by Race and Gender



Source: U.S. Bureau of Labor Statistics

Chart 5. June 2010 Unemployment Rates by Race and Age



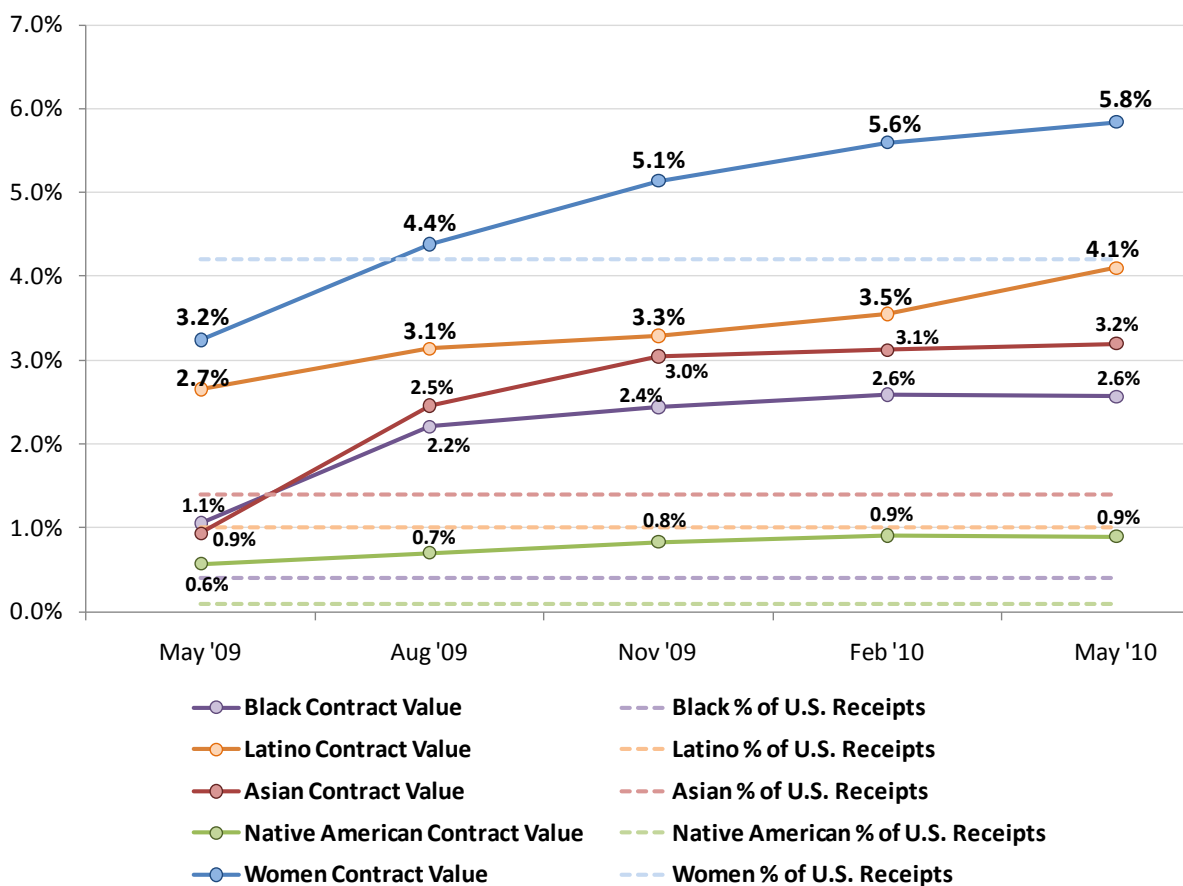
Source: U.S. Bureau of Labor Statistics



FEDERAL ARRA CONTRACT PROCUREMENT

As analysis of contract procurement over the past year shows (**Chart 6**), procurement to businesses owned by women and non-Whites has steadily grown over the duration of the Recovery, reflecting the value of stabilizing businesses in communities which have been hit particularly hard by the recession. However, most sub-groups within the non-White business community have still received a smaller share of contracts than the share of U.S. businesses they represent (see **Chart 7** on next page).¹

Chart 6. ARRA Contract Procurement Over-the-Year, by Race of Business Owner

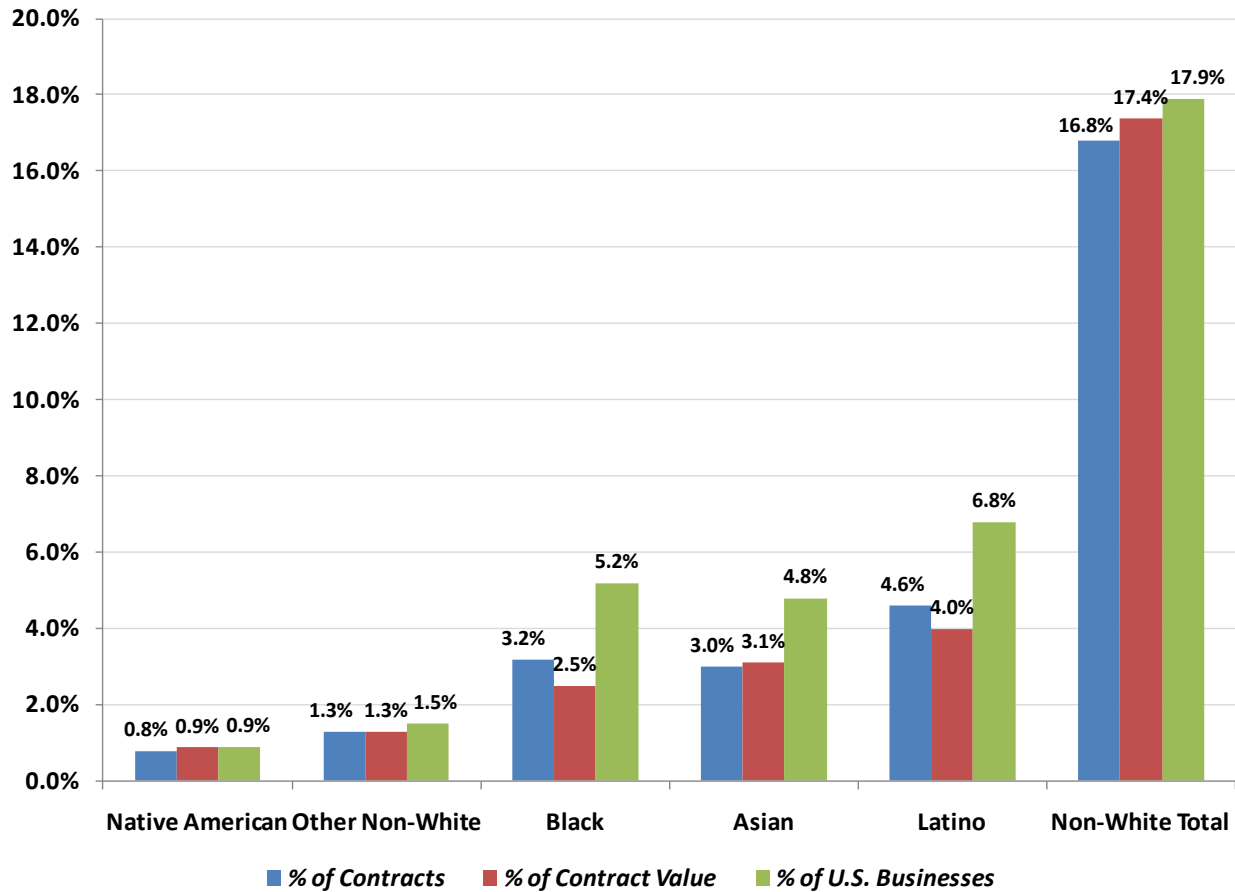


Source: Federal Procurement Data System (7/2/2010), 2002 U.S. Economic Census Survey of Business Owners

¹ Data for businesses owned by “Non-Whites” is derived from aggregating the following categories in the Recovery Report from the Federal Procurement Data System: Asian Indian, Asian Pacific, Black, Hispanic, Native American, Alaskan Native, American Indian, Indian Tribe, Native Hawaiian, and Tribally Owned.



Chart 7. Federal ARRA Contract Procurement by Race of Business Owner (From February 2009 thru July 2010)



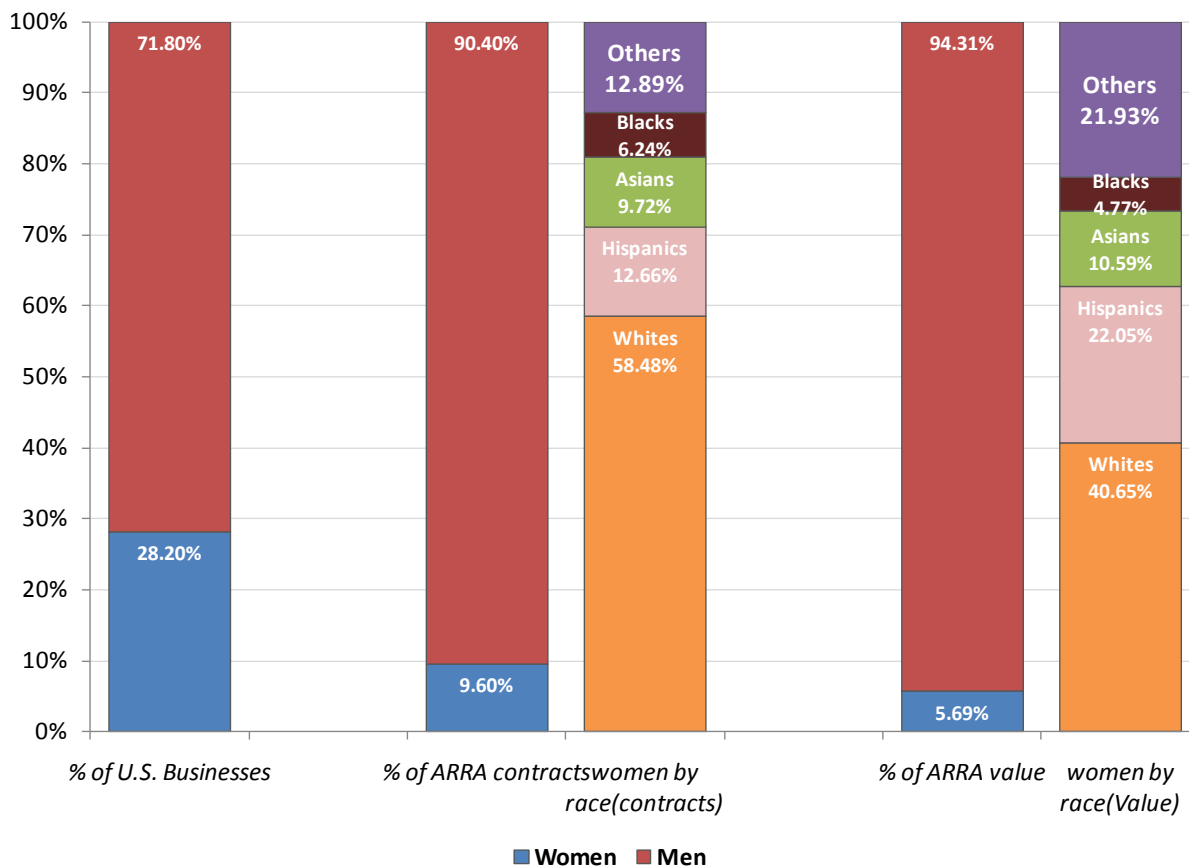
Source: Federal Procurement Data System (7/2/2010), 2002 U.S. Economic Census Survey of Business Owners

Further analysis of contract procurement to businesses owned by women shows that this subset of business owners has received, proportionately, the least amount of contracts and investment of all major groups. As **Chart 8** shows, although women represent over 28% of all U.S. business owners,² they have received less than 10% of all Federal ARRA contracts, and just over 5% of all contract value. Additional breakdown of women-owned recipients by race shows that Latinas, in particular, have managed to procure larger contracts than other female business owners, while businesses owned by Black women have received the smallest share of contracts.

² Source: 2002 U.S. Economic Census, Survey of Business Owners, <http://www.census.gov/econ/sbo/02/womensof.html>



Chart 8. Federal ARRA Contract Procurement to Women-Owned Businesses



Source: Federal Procurement Data System (7/2/2010), 2002 U.S. Economic Census Survey of Business Owners

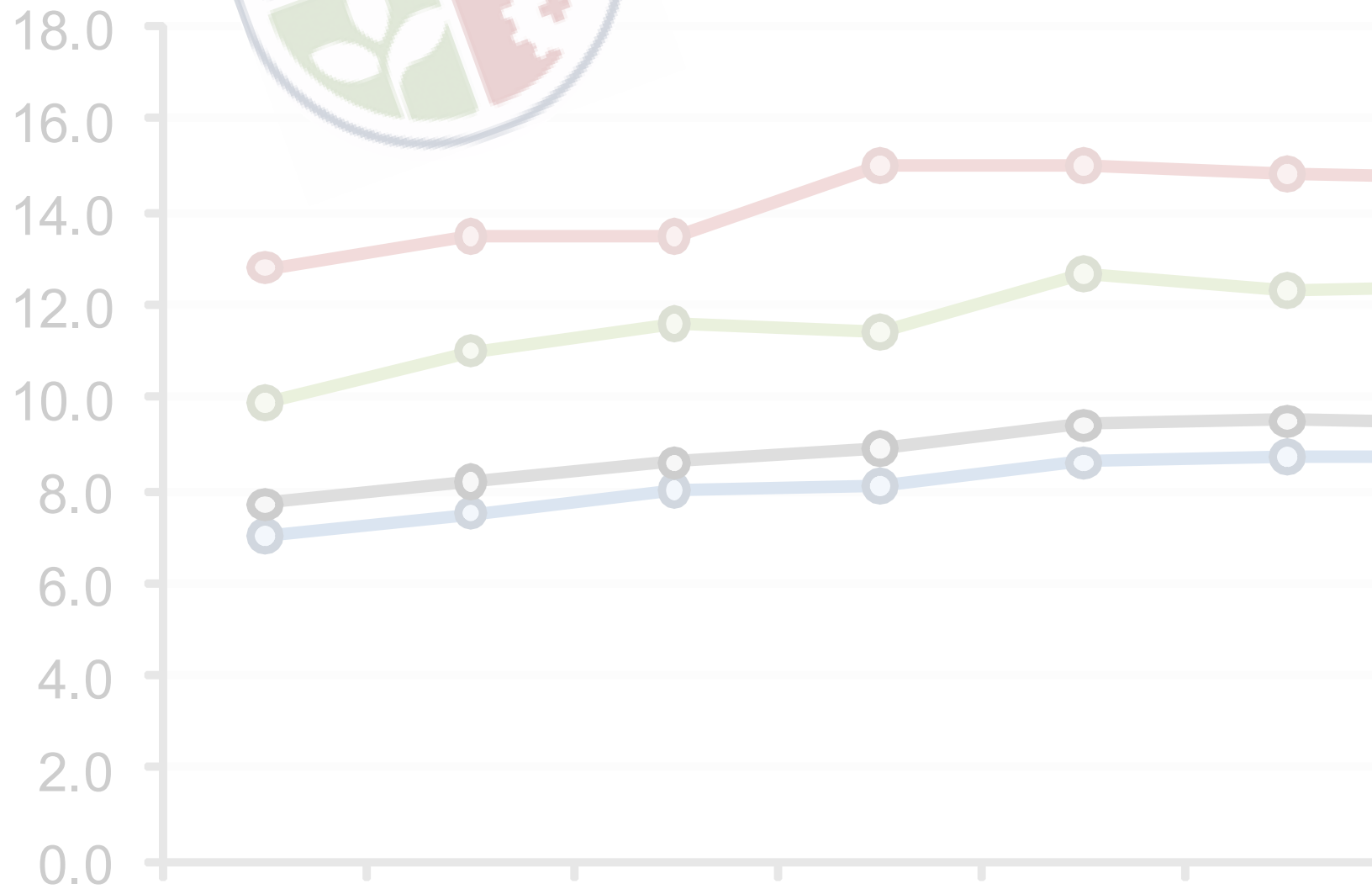
RACE-RECOVERY INDEX

The Race-Recovery Index, a project of the Kirwan Institute, is designed to measure how all people, but particularly marginalized populations, are faring in the midst of the national recovery efforts. The two primary tools for measurement used on a monthly basis are the national unemployment figures by race, and the Federal contract procurement of the American Recovery and Reinvestment Act of 2009 (ARRA). Additional forms of measurement may eventually be added.

For more information, please visit:

www.fairrecovery.org

FairRecovery.org



KIRWAN INSTITUTE FOR THE STUDY OF RACE AND ETHNICITY

THE OHIO STATE UNIVERSITY

433 MENDENHALL LABORATORY | 125 SOUTH OVAL MALL | COLUMBUS OH 43210

Ph: 614.688.5429 | Fax: 614.688.5592

Website: www.kirwaninstitute.org